

When you are finished

Bridge Design

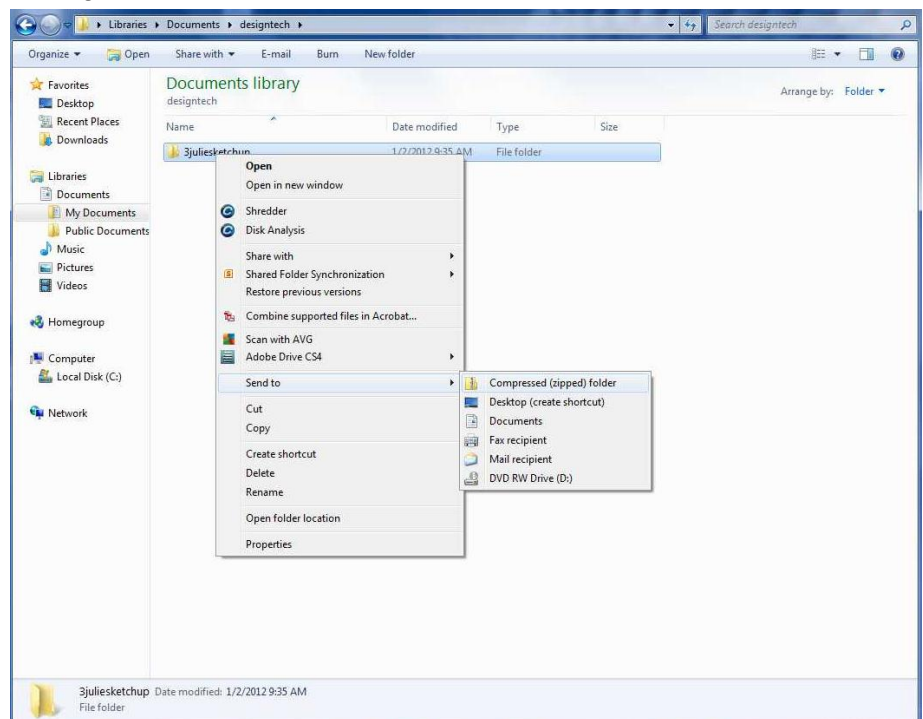
When you are finished you need to:

1. Make sure all required documents are in your working folder. For this module it should include:

Under Minimum three bridge designs, one of which should be \$150,000.

2. Zip the folder:
 - a. Navigate to documents>designtech. You should see your design tech folder.
 - b. Right click on your working folder.

- c. Select Send to>Compressed (zipped) folder from the menu. This will create a new zipped folder below the first one. You can recognize it because it has a zipper over the folder:



- d. Drag this folder onto Mr. Clark's drop box. (Monarch>Instruct>David Clark) to hand it in.

Turn in your Truss Table to Mr. Clark. We will test it to see how much it holds.

Compression Force/Strength is the ratio between how much force is being applied to a given member and how much force that member can take in compression.

Compression is internal force that tends to shorten a member.

- 3.