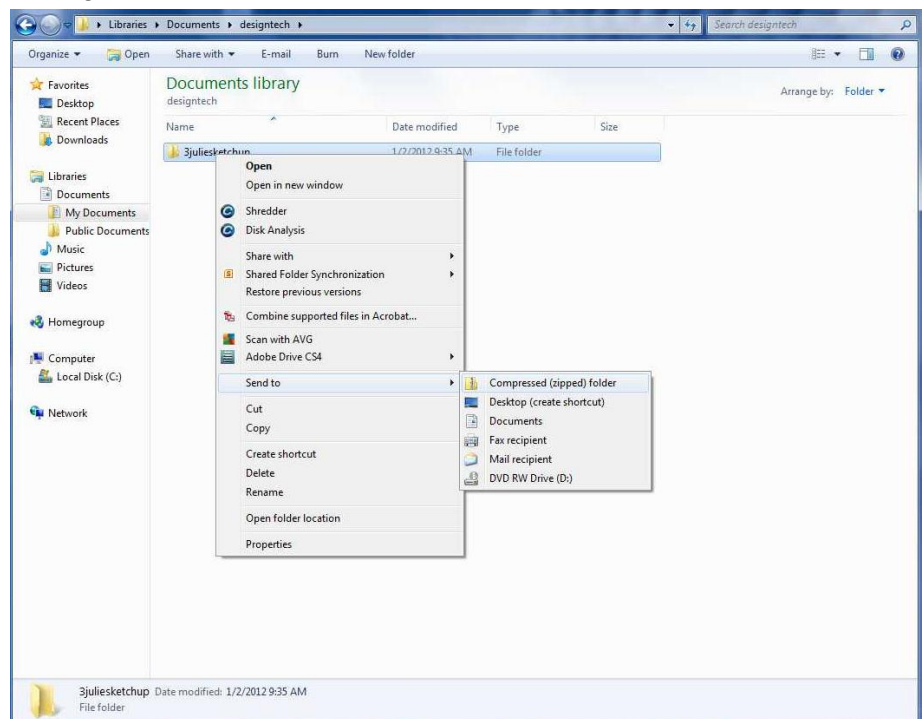


When you are finished you need to:

1. Make sure all required documents are in your working folder. For this module it should include:
 - a. Dog house with landscaping
 - b. Completed Villa Savoye
 - c. Final Challenge
2. Zip the folder:
 - a. Navigate to documents>designtech. You should see your SketchUp folder.
 - b. Right click on your working folder.

- c. Select Send to>Compressed (zipped) folder from the menu. This will create a new zipped folder below the first one. You can recognize it because it has a zipper over the folder:



- d. Drag this folder onto Mr. Clark's drop box. (Monarch>Instruct>David Clark) to hand it in.
3. Turn in your scale model to Mr. Clark.